

## TECHNICAL SPECIFICATIONS

Product Name	MightyWifi 4G LTE mobile hotspot
Model	Mighty M1
Size	85mm x 20.6mm
Weight	110g
Bands	FDD-LTE B1/B2/B3/B4/B5/B7/B8/B12/B17/B18/B19/B20
	TDD-LTE B38/B39/B40/B41
	WCDMA B1/B2/B4/B5/B8
	GSM B2/B3/B5/B8
WLAN	2.4G WLAN IEEE 802.11 b/g/n
LCD Screen	1.54 inch
LCD Pixels	240 x 240 Pixels
Battery type	Lithium polymer battery
Battery size	3000mAh
Continuous working hours	12 H
USB Port	Input 5V1A, Micro USB

### WARNING

- Use original accessories in order to avoid potential fire, explosion, or any other hazards.
- Keep in a cool, dry environment, and avoid getting the Hotspot wet.
- Do not expose the device to high temperatures from sources such as direct sunlight, microwave, oven, heater, etc. Overheating the battery may cause explosion.
- Operating Temperature Range: 32°F- 113°F. Avoid using the Hotspot in a high temperature environment for long periods to prevent shortening the lifespan of the Hotspot. The Hotspot stops charging automatically if the battery temperature reaches 122°F and resumes charging when the battery cools down. The device will automatically turn off if the battery temperature reaches 140°F.
- When the device is fully charged and not in use, disconnect the charger from the device.
- The built-in battery is not removable. Do not disassemble the device for any reason. The battery can only be replaced by the official authorized service provider.

### FCC STATEMENT

This equipment has been tested and found to comply with the limits for a Class B digital device, pursuant to part 15 of the FCC Rules. These limits are designed to provide reasonable protection against harmful interference in a residential installation. This equipment generates, uses, and can radiate radio frequency energy and, if not installed and used in accordance with the instructions, may cause harmful interference to radio communications. However, there is no guarantee that interference will not occur in an installation. If this equipment does cause harmful interference to radio or television reception, which can be determined by turning the equipment off and on, the user is encouraged to try to correct the interference by one or more of the following measures:

- Reorient or relocate the receiving antenna.
- Increase the separation between the equipment and receiver.
- Connect the equipment into an outlet on a circuit different from that to which the receiver is connected.
- Consult with the dealer or an experienced radio/TV technician for help.

### FCC RADIATION EXPOSURE STATEMENT

This device complies with FCC SAR exposure limits set forth for an uncontrolled environment. SAR compliance for using the equipment near the human body has been evaluated at 5mm. This equipment must not be co-located or operating in conjunction with any other antenna or transmitter. End-users and installers must be providing with antenna installation instructions and consider removing the no-collocation statement. This device complies with Part 15 of the FCC Rules. Operation is subject to the following two conditions:

- this device may not cause harmful interference, and
- this device must accept any interference received, including interference that may cause undesired operation.

### CAUTION

Any changes or modifications not expressly approved by the party responsible for compliance could void the user's authority to operate the equipment.

### RF EXPOSURE INFORMATION (SAR)

- This device meets the government's requirements for exposure to radio waves.
- The SAR limit set by the FCC is 1.6W/kg.
- The highest reported SAR values under the FCC regulatory for your device are listed below:
  - Body SAR: 1.169 W/kg
- The SAR limit set by the CE is 2.0W/kg
- The highest reported SAR values under the CE regulatory for your device are listed below:
  - Body SAR: 0.794 W/kg

### CONTACT

www.mightywifi.net  
 LTI Telecom, LLC.  
 Tel: 201-731-3839  
 E-mail: support@mightywifi.net  
 Address: 100 W. Forest Ave. Unit E. Englewood,  
 NJ 07631 USA

### COPYRIGHT NOTICE

LTI Telecom, LLC, reserves the right of final interpretation of the Hotspot regarding MightyWifi and the Hotspot trademark.

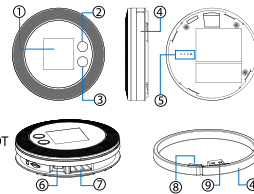
### FOR MORE DETAILS

Please visit [www.mightywifi.net](http://www.mightywifi.net)

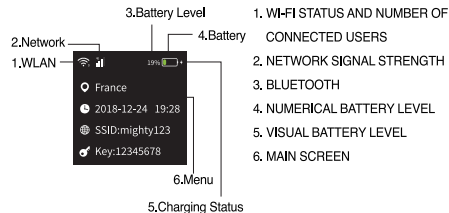


## HOTSPOT GUIDE

- LCD SCREEN
- POWER / SELECT BUTTON
- NAVIGATION / NEXT BUTTON
- USB CABLE
- EXTENSION INTERFACE FOR POWERBANK
- MICRO USB INTERFACE
- USB CABLE TYPE A STORAGE SLOT
- USB CABLE MICRO USB PLUG
- USB CABLE TYPE A USB PLUG



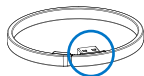
## LCD SCREEN



## HOTSPOT BENEFITS

- Qualcomm MDM9x07 LTE CAT4 High speed network
- 16-band 4G network frequency which allows global coverage
- 2.4G WLAN IEEE802.11b/g/n for a stable network connection
- Able to connect up to 5 devices
- 3000mAh High-density Lithium Polymer Battery. Up to 12 working hours
- Standard modular structure for add-on options
- Mobile App to monitor and extend usage

## USB CABLE



Pull out USB cable for charging when necessary.

## FUNCTIONS

- 1) Power / Select Button: Hold for 3 seconds to Power On or Off.
- 2) Navigation / Next Button : Click to navigate the Menu.
- 3) After 40 seconds, the device enters sleep mode. Double press the power button to wake up the Hotspot.

## MENU OPTIONS

- 1) Press any button to enter menu options.
- 2) Use power button or next button to select functions.

## CONNECT TO YOUR WIFI

Power on the MightyWifi, find the SSID (name of the wifi), and enter the password displayed on the device screen

## FAQ

### - How long does it take to fully charge the Hotspot?

It takes about 4 hours from a low battery level to a fully charged battery level. When not in use, turn it off to conserve battery.

### - How long does it take to connect to the internet after turning on the Hotspot?

It takes 1-3 minutes and may take longer for the first network connection in a new country setting. Upon connecting, it may take another 1-3 minutes for the network to be high speed.

### - What should I do when my mobile device cannot connect to the Hotspot?

Make sure the mobile device's Wi-Fi is turned on. Refresh the network list, and search for the Wi-Fi name of the Hotspot on your device. Make sure to input the correct password.

### - What should I do if the Hotspot cannot get connected to a cellular network?

Make sure the Hotspot is in a normal status. The signal is weak around airports, mountains, highways, harbors, basements, rural areas, and islands. Relocate to get a better signal, and reboot.

If the Hotspot still cannot connect to a cellular network, please contact MightyWifi customer service for assistance.

### - What should I do if the device is lost or stolen?

If the Hotspot is lost or stolen, contact MightyWifi customer service immediately.

## TECHNICAL FEATURES AND CHARACTERISTICS FOR EU

WLAN	
Operation Frequency	2412MHz~2472MHz 802.11b/802.11g/802.11n(H20) 2422MHz~2462MHz 802.11n(H40)
Maximum Power(2.4GHz)	16.67dBm (E.I.R.P.)
GSM	
Operation Frequency	E-GSM 900: 880~915MHz DCS 1800: 1710~1785MHz
Maximum Power (E-GSM 900)	29.36dBm
WCDMA	
Operation Frequency	Band 1 -- TX:1922.4MHz~1977.6MHz, RX:2112.4MHz~2167.6MHz Band 8 -- TX: 882.4MHz~912.6MHz, RX:927.4MHz~957.6MHz
Maximum Power (Band 1)	29.36dBm
Maximum Power (Band 8)	23.81dBm
FDD LTE	
Operation Frequency	Band 1 -- TX:1922.5MHz~1977.5MHz, RX:2112.5MHz~2167.5MHz Band 3 -- TX:1710.7MHz~1784.3MHz, RX:1805.7MHz~1879.3MHz Band 7 -- TX:2502.5MHz~2567.5MHz, RX:2622.5MHz~2687.5MHz Band 8 -- TX:880.7MHz~914.3MHz, RX:925.7MHz~959.3MHz Band 20 -- TX:834.5MHz~859.5MHz, RX:793.5MHz~818.5MHz
Maximum Power (Band 1)	23.51dBm
Maximum Power (Band 3)	22.89dBm
Maximum Power (Band 7)	22.74dBm
Maximum Power (Band 8)	23.85dBm
Maximum Power (Band 20)	23.74dBm
FDD LTE	
Operation Frequency	Band 38 -- TX:2572.5MHz~2617.5MHz, RX:2572.5MHz~2617.5MHz Band 40 -- TX:2302.5MHz~2397.5MHz, RX:2302.5MHz~2397.5MHz
Maximum Power (Band 38):	23.85dBm
Maximum Power (Band 40):	23.77dBm